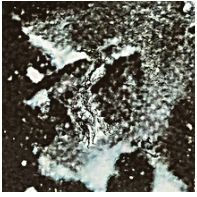


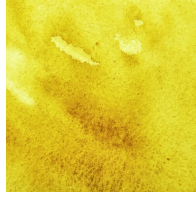
# DELLA MAGNA WATERCOLORS

H A N D M A D E I N I T A L Y



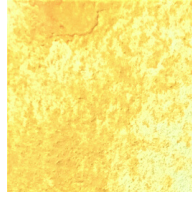
001 Selenite della Sicilia  
*Selenite from Sicily*

◆ N/A ● 8/8 G



004 Lacca di Spincervino  
*Genuine Stii de Grain*

♣ NY14 ○ 4/8



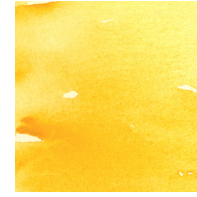
006 Diaspro giallo autentico  
*Genuine Yellow Jasper*

◆ N/A ● 8/8 G



007 Kamala autentico  
*Genuine Kamala Resin*

♣ NO2 ○ 6/8



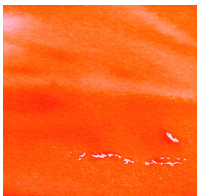
008 Limonite Naturale  
*Natural Limonite*

▲ PY43 ● 8/8



011 Ocra arancia  
*Orange Ochre*

▲ PY43 ● 8/8



014 Arancio Pyrrolo  
*Pyrrol Orange*

▮ PO73 ● 8/8



016 Opale Rosso autentico  
*Genuine Red Opalite*

◆ N/A ○ 8/8 G



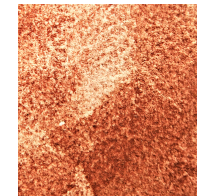
020 Sangue di Drago autentico  
*Genuine Dragon's Blood*

♣ NR31 ○ 6/8 G



021 Rosso Medici  
*Medici Red*

▮ PR144 ○ 7/8



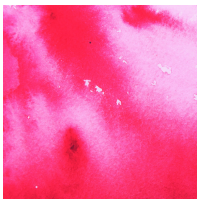
024 Diaspro Rosso autentico  
*Genuine Red Jasper*

◆ N/A ● 8/8 G



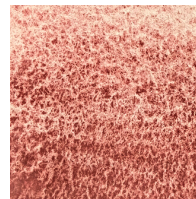
025 Catlinite Nativa  
Americana autentica  
*Native American Catlinite*

▲ N/A ● 8/8 G



023 Carminio di Cocciniglia  
*Gen. Cochineal Carmine*

♣ NR4 ○ 4/8



026 Rosa dei Vasai  
*Potter's Pink*

▮ PR233 ○ 8/8 G



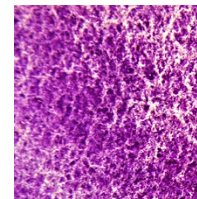
027 Magenta di Cocciniglia  
*Gen. Cochineal Magenta*

♣ NR4 ○ 5/8 G



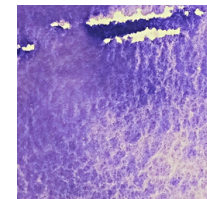
030 Rosa Oltremare  
*Ultramarine Rose*

▮ PR259 ○ 8/8 G



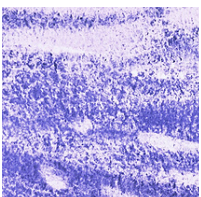
031 Viola di Cobalto scuro  
*Cobalt Violet Deep*

▮ PV14 ● 8/8 G



034 Viola Oltremare  
*Ultramarine Violet*

▮ PV15 ○ 8/8 G



038 Blu della Dinastia Han  
*Gen. Han Dynasty Blue*

▮ N/A ○ 8/8 G



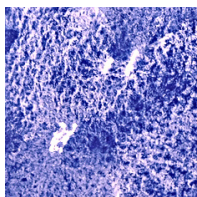
040 Indaco Indiano autentico  
*Genuine Indian Indigo*

♣ NB1 ○ 6/8



041 Vivianite Blu autentica  
*Genuine Blue Vivianite*

◆ N/A ● 8/8 G



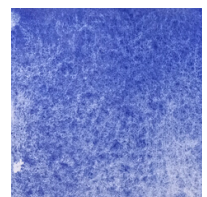
042 Smaltino autentico  
*Genuine Smalt*

▮ PB32 ○ 8/8 G



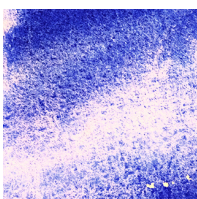
043 Lapislazzuli Cile autentico  
*Genuine Lapislazzuli Chile*

◆ N/A ○ 8/8 G



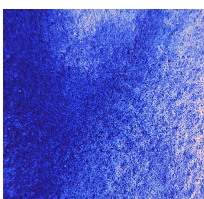
044 Lapislazzuli Afghanistan  
autentico  
*Lapislazzuli Afghanistan*

◆ N/A ○ 8/8 G



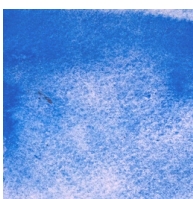
045 Blu di Fra' Angelico  
*Genuine Fra' Angelico  
Blue Lapislazzuli*

◆ N/A ○ 8/8 G



047 Oltremare Francese  
*French Ultramarine*

▮ PB29 ○ 8/8 G



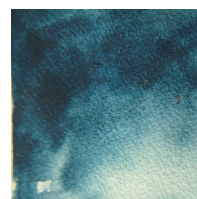
048 Blu di Cobalto  
*Cobalt Blue*

▮ PB28 ● 8/8 G



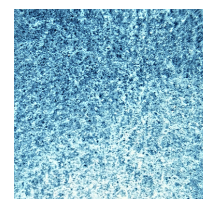
049 Blu di Prussia  
*Prussian Blue*

▮ PB27 ○ 8/8



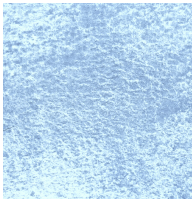
050 Indaco di Guado Italiano  
*Gen. Italian woad Indigo*

♣ NB1 ○ 6/8



053 Azzurrite Iran autentica  
*Genuine Azurite from Iran*

◆ N/A ○ 8/8 G



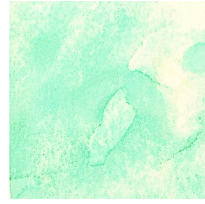
057 Fritta blu Egizia  
Autentica  
*Genuine Egyptian Blue*  
PB31 8/8 G



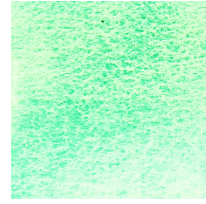
058 Ceruleo di Cobalto  
*Cobalt Cerulean*  
PB36 8/8 G



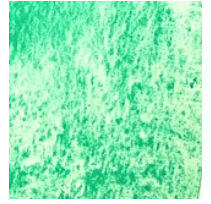
060 Turchese di Cobalto  
*Cobalt Turquoise*  
PB28 8/8 G



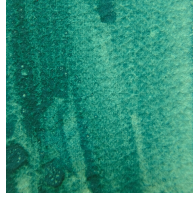
061 Crisocolla autentica  
*Genuine Chrysocolla*  
N/A 8/8 G



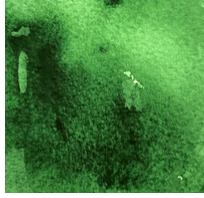
062 Malachite autentica  
*Genuine Malachite*  
PG39 8/8 G



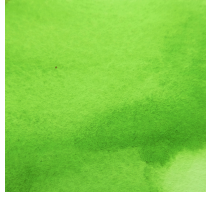
063 Cristalli di Malachite  
del Congo autentica  
*Malachite Crystals Congo*  
PG39 8/8 G



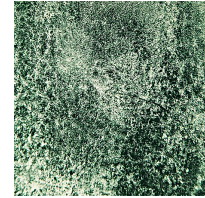
065 Verde Maya  
*Mayan Green*  
N/A 7/8 G



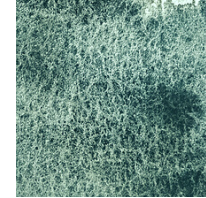
067 Verde Vescica  
*Sap Green*  
PG8 7/8



068 Crisolite Autentica  
*Genuine Chrysolite*  
N/A 8/8



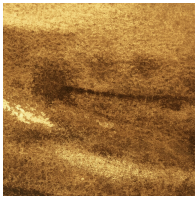
070 Verde di Cobalto Scuro  
*Cobalt Green Deep*  
PG26 8/8 G



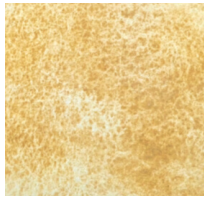
071 Vivianite Lacustre  
*Lacustrine Vivianite*  
N/A 8/8 G



072 Clorite autentica  
*Genuine Chlorite*  
N/A 8/8 G



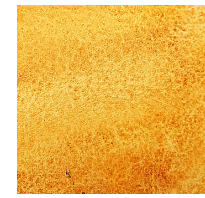
074 Terra d'Ombra naturale  
*Natural Raw Umber*  
PBR7 8/8



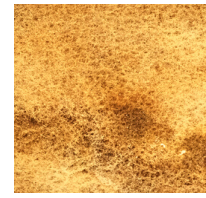
075 Occhio di Tigre autentico  
*Genuine Tiger's eye*  
N/A 8/8 G



076 Ocra Gialla Andalusia  
*Andalusian Ochre*  
PY43 8/8



077 Ocra dorata Della Boemia  
*Bohemian Golden Ochre*  
PY43 8/8 G



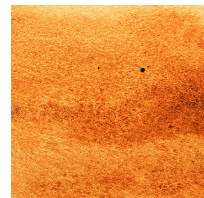
079 Goethite autentica  
*Genuine Goethite*  
PBR7 8/8 G



080 Bolo dell'Armenia  
*Armenian Bole*  
PBR7 8/8



081 Ematite Fredda della Russia  
*Cold Hematite from Russia*  
PRI02 8/8



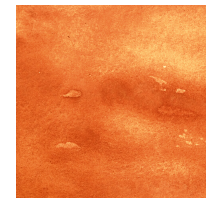
082 Ozocerite autentica  
*Genuine Ozocerite*  
N/A 8/8 G



083 Ocra Arancia della Sardegna  
*Sardinian Orange Ochre*  
PBR7 8/8 G



085 Terra di Siena Bruciata  
del Monte Amiata  
*Monte Amiata Burnt Sienna*  
PBR7 8/8



086 Sinopia Persiana  
*Persian Sinopia*  
PRI02 8/8



087 Morrone Mogano  
*Mahogany Brown*  
PBR25 8/8



088 Ocra Morella della Sardegna  
*Sardinian Red Brown Ochre*  
PRI02 8/8 G



089 Caput Mortuum  
*Caput Mortuum*  
PRI01 8/8 G



090 Violetto Costa Azzurra  
*Cote d'Azur Violet*  
N/A 8/8 G



092 Porfido dell'Armenia  
*Porphyry from Armenia*  
PRI02 8/8 G



094 Augite dell'Armenia  
*Armenian Augite*  
N/A 8/8 G



097 Terra di Cassel  
autentica  
*Genuine Cassel Earth*  
NBR8 7/8 G



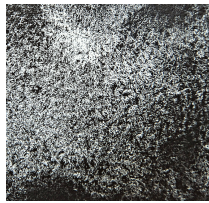
100 Lava Nera naturale  
Natural Black Lava

N/A 8/8 G



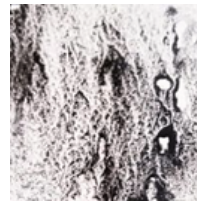
101 Nero di Viite autentico  
Genuine Vine Black

PBK8 8/8



103 Nero di Ossido di Ferro  
Iron Oxide Black

PBK11 8/8 G



101 Magnetite autentico  
Genuine Magnetite

N/A 8/8 G

## LEGEND:

### SORT OF PIGMENT

- Vegetal pigment
- Pure mineral pigment
- Syntetic pigment
- Natural earth pigment

### LIGHTFASTNESS RATING

Bad 1- 8 Excellent

### TRASPARENCY

- transparent
- semi trasparente
- semiopaque
- opaque

### GRANULATION

G = granulating pigment