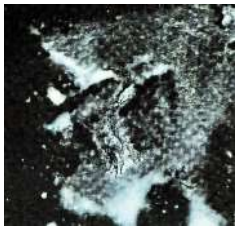


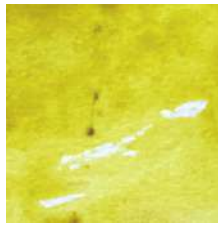
John Magna

DELLA MAGNA WATERCOLORS

HANDMADE IN ITALY



001 Selenite della Sicilia
Selenite from Sicily
N/A 8/8 G



004 Giallo Verde Azo (est.)
Azo Green Yellow
PG10 8/8



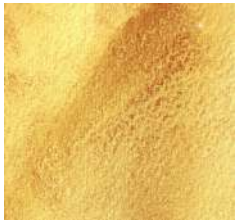
006 Giallo Limone Isoindolo
Isoindole Lemon Yellow
NY108 8/8



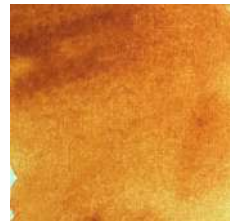
008 Lacca di Reseda
Genuine Weld Lake
NY2 5/8



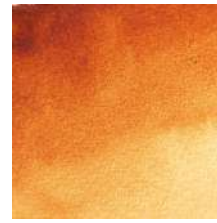
009 Lacca di Spincervino
Genuine Stil de Grain
NY14 4/8



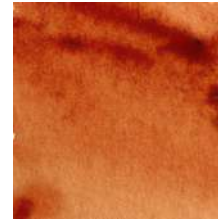
012 Resina Kamala
Genuine Kamala Resin
NO2 6/8



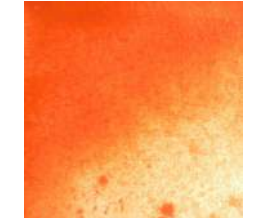
018 Chinacridone Oro
Originale (estinto)
Original Quinacridone Gold (ext.)
PO49 8/8



019 Chinacridone Oro
Scuro (estinto)
Quinacridone Deep Gold (ext.)
PO49 8/8



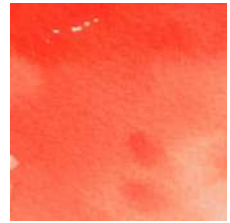
021 Chinacridone Arancio
Ruggine (estinto)
Quinacridone Rust Orange (ext.)
PO48 8/8



025 Arancio Scuro Isoindolo
Isoindole Deep Orange
PO61 7/8



027 Chinacridone Arancio (estinto)
Quinacridone Orange (extinct)
PO47 8/8



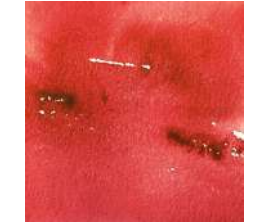
030 Scarlatto Antrachinone (est.)
Anthraquinone Scarlet (extinct)
PR168 7/8



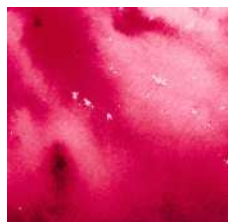
035 Sangue di Drago Aut.
Genuine Dragon's Blood
NR31 4/8



037 Lacca di Robbia Rossa Aut.
Genuine Red Madder Lake
NR9 6/8



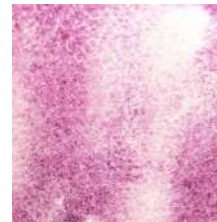
040 Rosso Medici
Medici Red
PR144 7/8



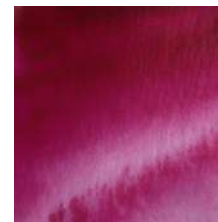
045 Carminio di Cocciniglia
Gen. Cochineal Carmine
NR4 4/8



050 Rosa dei Vasai
Potter's Pink
PR233 8/8 G



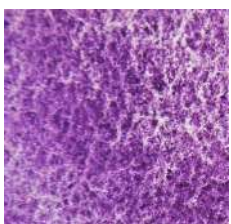
053 Rosa Oltremare
Ultramarine Pink
PR259 8/8 G



060 Porpora Chinacridone
Quinacridone Purple
PV19 8/8



062 Violetto Chinacridone
Quinacridone Violet
PV55 8/8



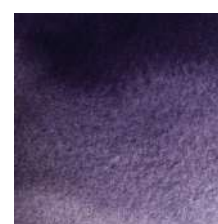
065 Viola di Cobalto scuro
Cobalt Violet Deep
PV14 8/8 G



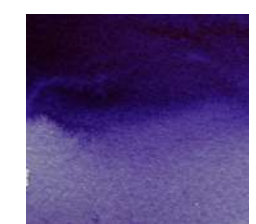
068 Viola Oltremare
Ultramarine Violet
PV15 8/8 G



071 Viola Dioxazina
Dioxazine Violet
PV37 7/8



074 Lacca di Legno Campeggio
Logwood Lake
NBK1 4/8



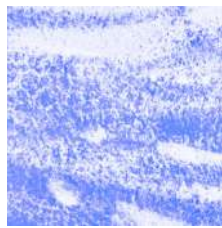
076 Blu Benzimidazo (estinto)
Benzimidazo Blue (extinct)
PB80 8/8



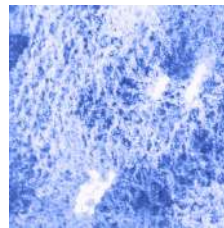
080 Indaco Indiano Autentico
Genuine Indian Indigo
NB1 6/8



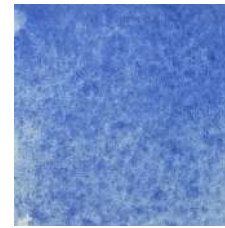
083 Vivianite Blu Autentica
Genuine Vivianite
N/A 8/8 G



090 Blu della Dinastia Han
Gen. Han Dynastie Blue
N/A 8/8 G



092 Smaltino autentico
Genuine Smalt
PB32 8/8 G



093 Lapislazzuli Afghanistan
Gen. Lapislazuli Afghanistan
PB29 8/8 G



094 Cenere di Lapislazzuli
Genuine Lapislazuli Ash
PB29 8/8 G



095 Blu di Fra' Angelico
*Genuine Fra' Angelico
Blue Lapislazuli*
PB29 8/8 G



096 Oltremare Francese
French Ultramarine
PB29 8/8 G



100 Blu di Cobalto
Cobalt Blue
PB28 8/8 G



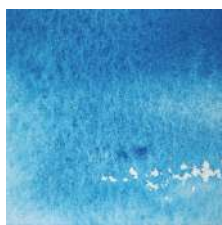
105 Indaco Giapponese di Persicaria
Japanese Indigo from Persicaria
NB1 6/8



106 Indaco di Guado Italiano
Gen. Italian woad Indigo
NB1 6/8



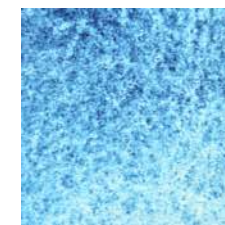
110 Blu di Prussia
Prussian Blue
PB27 8/8



112 Ceruleo di Cobalto
Cobalt Cerulean
PB36 8/8 G



113 Blu Manganese Autentico
Genuine Manganese Blue
PB33 8/8 G



115 Azzurro Della Magnaa
*Azzurro Della Magna
(genuine pure Azurite)*
PB30 8/8 G



119 Fritta blu Egizia Autentica
Genuine Egyptian Blue
PB31 8/8 G



122 Turchese di Cobalto
Cobalt Turquoise
PB28 8/8 G



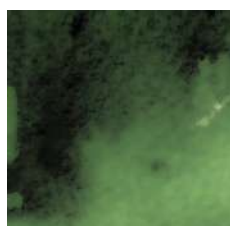
125 Turchese di Ftalo
Phthalo Turquoise
PB16 8/8 G



128 Crisocolla autentica
Genuine Chrysocolla
N/A 8/8 G



129 Malachite autentica
Genuine Malachite
PG39 8/8 G



135 Verde Vesica
Sap Green
PG8 6/8



138 Verde di Cobalto Scuro
Cobalt Green Deep
PG26 8/8 G



141 Vivianite Lacustre
Lacustrine Vivianite
N/A 8/8 G



145 Occhio di Tigre autentico
Genuine Tiger's eye
N/A 8/8 G



146 Limonite Naturale
Natural Limonite
PY43 8/8



147 Ocra Gialla Francese
French Yellow Ochre
PY43 8/8



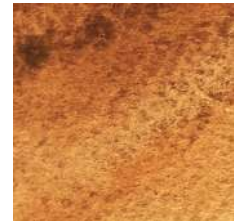
150 Goethite autentica
Genuine Goethite
PBR7 8/8 G



153 Ocra dorata Della Boemia
Bohemian Golden Ochre
PY43 8/8 G



157 Ozocerite autentica
Genuine Ozocerite
N/A 8/8 G



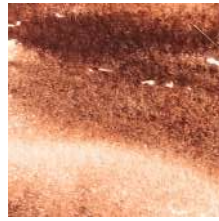
159 Arancio di Cosmos
Cosmos Orange Lake
N/A 6/8 G



161 Ocra Arancia della Sardegna
Orange Ochre Sardinia
PBR7 8/8 G



162 Bolo dell'Armenia
Armenian Bole
PBR7 8/8



164 Ematite Fredda della Russia
Cold Hematite from Russia
PR102 8/8 G



166 Terra di Siena Bruciata
del Monte Amiata
Monte Amiata Burnt Sienna
PR102 8/8



167 Rosso Ercolano
Ercolano Red
PR102 8/8



170 Sinopia Persiana
Persian Sinopia
PR102 8/8



172 Catlinite Nativa Americana
Genuine Native American Catlinite
PR102 8/8



173 Diaspro Rosso Autentico
Genuine Red Jasper
N/A 8/8 G



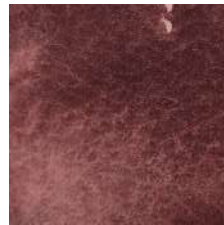
175 Morrone Mogano
Mahogany Brown
PBR25 8/8



178 Lava Rossa Naturale
Natural Red Lava
PR102 8/8 G



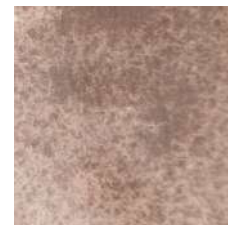
179 Ematite Naturale
Natural Red Hematite
PR102 8/8 G



180 Caput Mortuum
Caput Mortuum
PR102 8/8 G



182 Porfido dell'Armenia
Phorphyry from Armenia
PR102 8/8 G



183 Augite Grigio Viola Armenia
Violet Grey Augiite Armenia
PR102 8/8 G



187 Terra d'Ombra Naturale
Natural Raw Umber
PBR7 8/8



189 Terra d'Ombra Bruciata Cipro
Burnt Umber Cyprus
PBR7 8/8



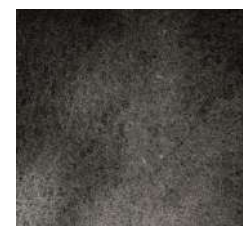
190 Terra d'Ombra Bruciata Scura
Dark Burnt Umber
PBR7 8/8



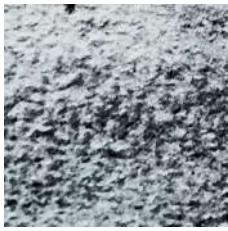
191 Terra di Cassel Autentica
Genuine Cassel Earth
NBR8 5/8 G



192 Bistro autentico
Genuine Bistre
Nbr11 8/8



193 Nero di Viite autentico
Genuine Vine Black
PBK8 8/8



195 Nero di Ossido di Ferro
Iron Oxide Black
PBK11 ● 8/8 G







196 Tormalina Autentica
Genuine Tourmaline
N/A ○ 8/8 G



197 Magnetite Naturale
Natural Magnetite
PBK11 ○ 8/8 G

LEGENDA

SYMBOL LEGEND:

TIPO DI PIGMENTO <i>TYPE OF PIGMENT</i>	RESISTENZA ALLA LUCE <i>LIGHTFASTNESS</i>	TRASPARENZA <i>TRANSPARENCY</i>	GRANULAZIONE <i>GRANULATION</i>
 Vegetale <i>Vegetal</i>	Debole 1 - 8 Eccellente <i>Poor 1 - 8 Excellent</i>	○ Trasparente <i>Transparent</i>	G = pigmento granulante <i>Granulating pigment</i>
 Minerale puro <i>Pure mineral</i>		◐ Semi trasparente <i>Semi-transparent</i>	
 Sintetico <i>Synthetic</i>		◑ Semi coprente <i>Semi-opaque</i>	
 Terra naturale <i>Natural earth</i>		● Coprente <i>Opaque</i>	

1. I colori dal vero potrebbero avere una tinta e una trama leggermente diverse da quelle visibili nel catalogo cartaceo o in versione digitale.
2. Alcuni colori della gamma, data la rarità o difficoltà di reperimento dei loro pigmenti di base, potrebbero non essere disponibili per certi periodi di tempo o talvolta a tempo indeterminato.

1. *Real colors may have a slightly different hue and texture than those shown in the paper or digital catalog.*
2. *Some colors in the range, due to the rarity or difficulty of obtaining their base pigments, may be unavailable for certain periods of time or sometimes indefinitely.*

